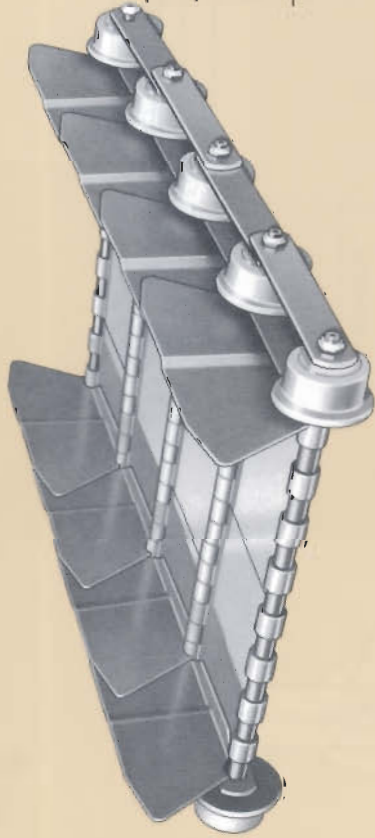


9" PITCH HINGED STEEL BELT



Mayfran hinged steel belting is constructed of die-formed 1/4" (9250) or 3/16" (9187) nominal thickness low carbon steel.

- Double row high carbon die-punched side bars.
- Plain or anti-friction bearing rollers
- Pin and sleeve hinge construction (steel or optional UHMW polyethylene tubing liner over pin through belt hinge joint)
- Hardened single flange rollers
- 3/16", 1/4", or 3/8" thick formed interlocking side wings welded to hinge links.



**Pin Style #3
Göttered**



**Pin Style #5
Locknut**



CHAIN DATA (INCHES)

Description	Chain Number							
	904	905	906	909	914	924	925	
Roller	TYPE	Plain	Anti-friction	Plain	Anti-friction	Plain	Anti-friction	
	DIA	4	4	3	3	4	4	
Side Bars	WIDTH	2	2	1 ⁹ / ₁₆	1 ⁹ / ₁₆	2	2	
	THK	3/8	3/8	1/4	3/8	1/2	1/2	
Pin	WIDTH	2	2	2	2	2 ¹ / ₂	2 ¹ / ₂	
	SPACE	2	2	1 ⁹ / ₁₆	1 ⁹ / ₁₆	2	2	
Bushing	DIA.	3/4	3/4	3/4	3/4	1	1	
	O.D.	1 ¹ / ₈	1 ¹ / ₈	1 ¹ / ₈	1 ¹ / ₈	1 ³ / ₈	1 ³ / ₈	
Allowable Belt Pull Ratings in Lbs.	LGTH.	2 ³ / ₄	2 ³ / ₄	2 ¹ / ₁₆	2 ⁵ / ₁₆	3	3	
		14,440	12,380	10,800	12,100	7,000	21,000	19,000

Optional Reinforcements

Channel (RC)



A-Pan (RA)



Top Plate (RP)

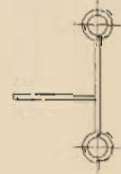


Available Cleat Styles

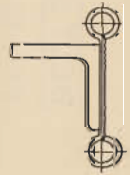
Optional Impact Shoe



Bar Cleat



Angle Cleat

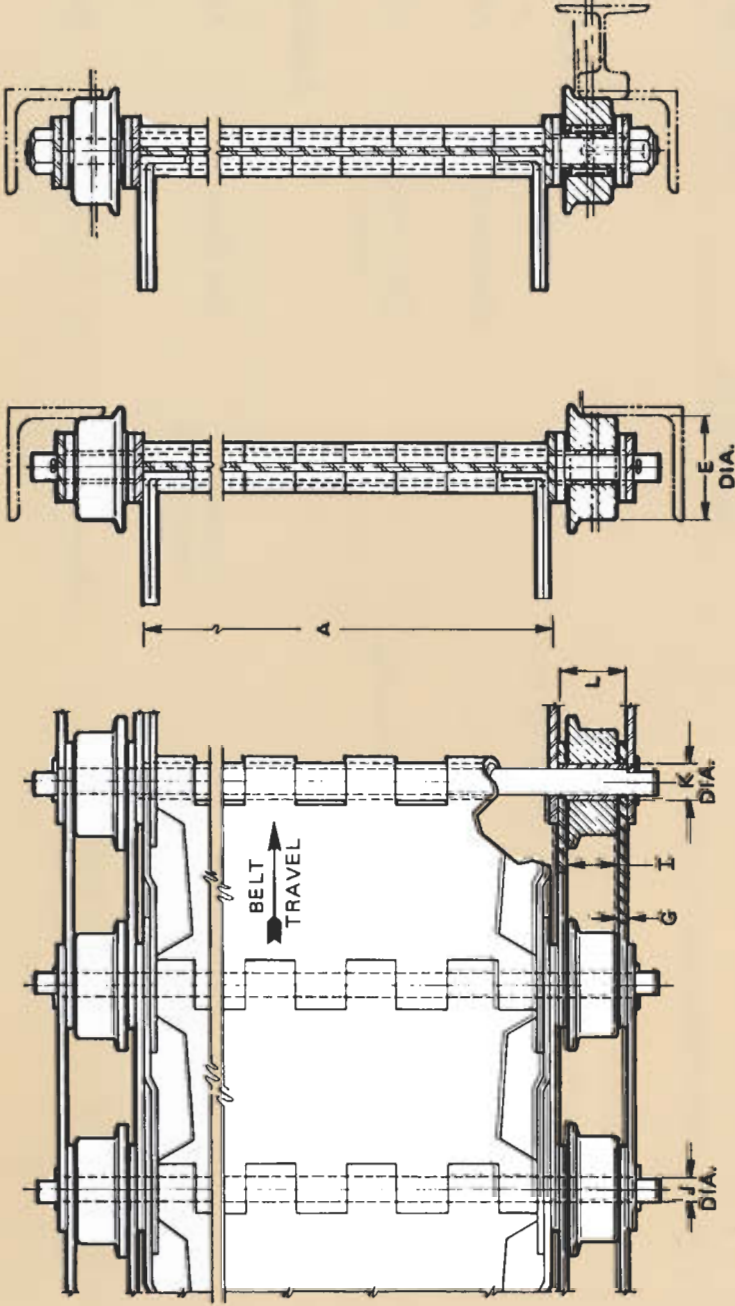


Formed Cleat



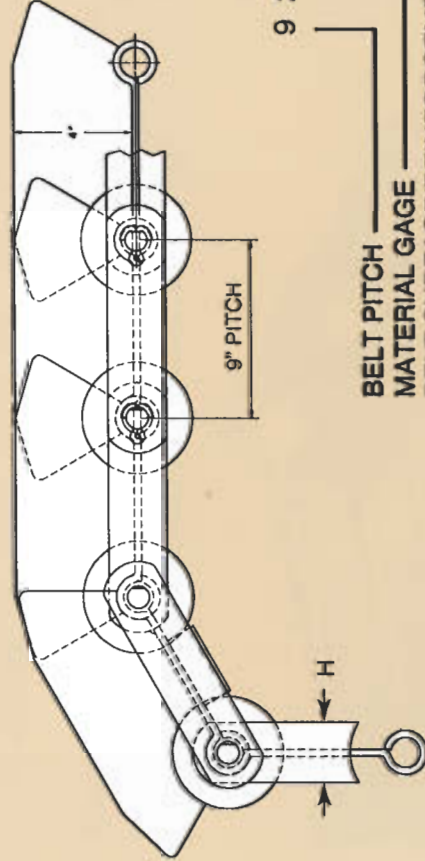
BELT SURFACE TYPE

- PN—PLAIN
- PA—PERFORATED(9187 ONLY)
0.218" DIA, 1" CENTERS
- PB—PERFORATED(9187 ONLY)
0.218" DIA, 3/4" CENTERS
- PC—PERFORATED(9250 ONLY)
0.375 DIA, 1" CENTERS
- PE—PERFORATED(9250 ONLY)
0.375" DIA, 1" CENTERS
- DN—DIMPLED
.5" CENTERS



ANTI-FRICTION
ROLLER

PLAIN
ROLLER



9 250 PN/RC-A-4-904-3 (GF)

- BELT PITCH
- MATERIAL GAGE
- BELT SURFACE/REINFORCEMENT
- NOMINAL BELT WIDTH
- GREASE FITTINGS
(Optional with Pin Style #5)
- PIN STYLE
- CHAIN NUMBER
- WING HEIGHT



9" PITCH HINGED STEEL BELT