

6" PITCH HINGED STEEL BELT



Mayfran hinged steel belting is constructed of die-formed 1/4" (6250) or 3/16" (6187) nominal thickness low carbon steel.

- Double row high carbon die-punched side bars.
- Plain or anti-friction bearing rollers
- Pin and sleeve hinge construction (steel or optional UHMW polyethylene sleeve liner over pin through belt hinge joint)
- Hardened single flange rollers
- 3/16", 1/4", or 3/8" thick formed interlocking side wings welded to hinge links.



Pin Style #3
Cottered



Pin Style #5
Locknut

CHAIN DATA (inches)

Description	Chain Number	
	603/607	609
Roller	Plain	Anti-friction
TYPE	E	3
DIA.	3	3
WIDTH	1 ⁹ / ₁₆	1 ⁹ / ₁₆
THK.	1/4	3/8
Side Bars	G	1/4
WIDTH	H	2
SPACE	I	1 ⁹ / ₁₆
DIA.	J	3/4
O.D.	K	1 ¹ / ₈
LGTH.	L	2 ⁵ / ₁₆
Allowable belt Pull Ratings in Lbs.	10,800	12,100
		7,000

Optional Reinforcements

Channel (RC)



A-Pan (RA)



Top Plate (RP)



Available Cleat Styles

Optional Impact Shoe



Bar Cleat



Angle Cleat

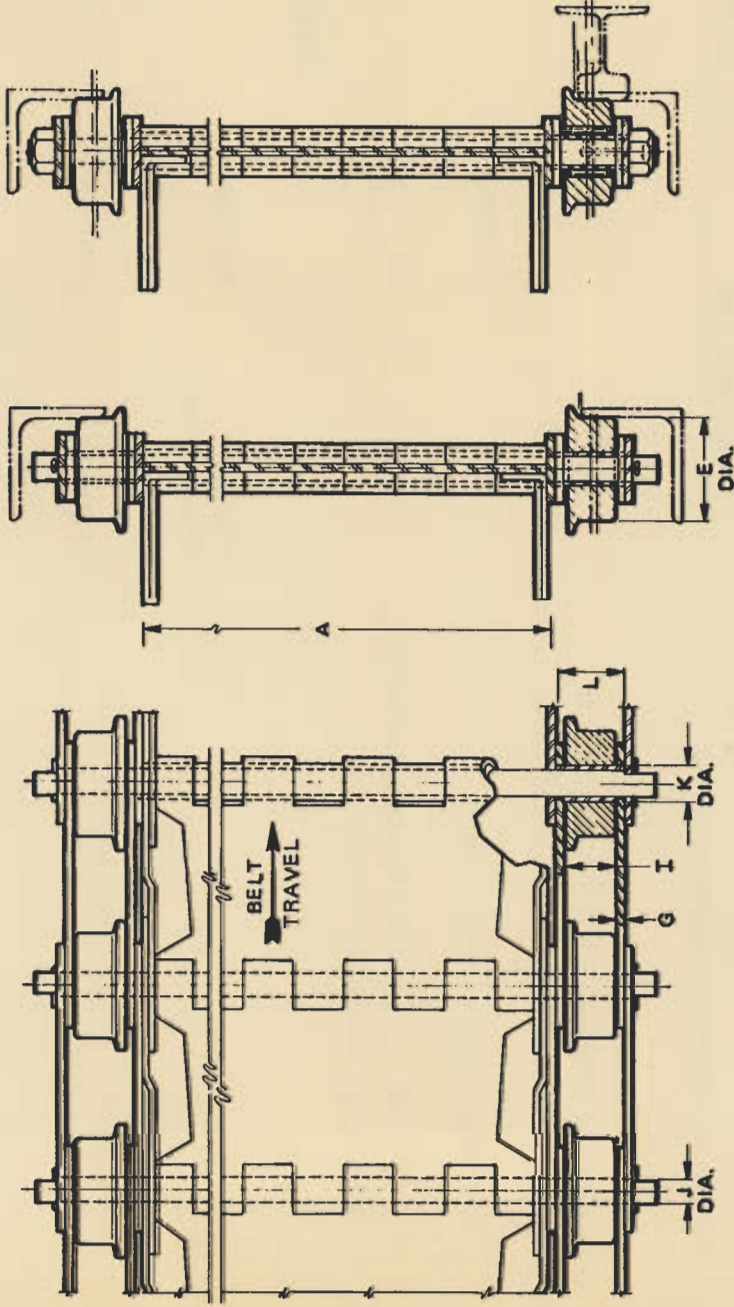


Formed Cleat



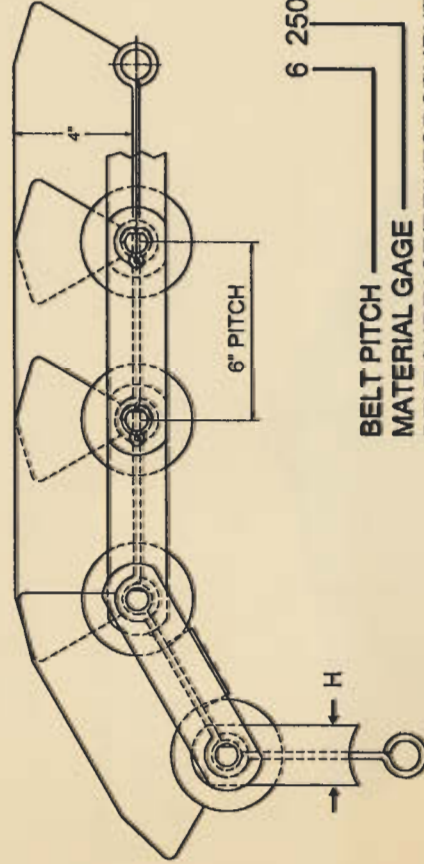
BELT SURFACE TYPE

- PN—PLAIN
- PA—PERFORATED(6187 ONLY)
0.218" DIA, 1" CENTERS
- PB—PERFORATED(6187 ONLY)
0.218" DIA, 3/4" CENTERS
- PC—PERFORATED(6250 ONLY)
0.375 DIA, 1" CENTERS
- PE—PERFORATED(6250 ONLY)
0.375" DIA, 1" CENTERS
- DN—DIMPLED
.5" CENTERS



ANTI-FRICTION
ROLLER

PLAIN
ROLLER



- 6 250 PN/RC—A—4—607—3 (GF)
- BELT PITCH
- MATERIAL GAGE
- BELT SURFACE/REINFORCEMENT
- NOMINAL BELT WIDTH
- GREASE FITTINGS
(Optional with Pin Style #5)
- PIN STYLE
- CHAIN NUMBER
- WING HEIGHT



P.O. Box 43038 Cleveland, OH 44143-0038 • Phone: 440/461-4100 Fax: 440/461-0147

©MAYFRAN 2005 PRINTED USA

6" PITCH HINGED STEEL BELT

6HSB 2M PRO