

12" PITCH Z-PAN STEEL BELT 12375Z & 12500Z



BELT
TRAVEL

Mayfran 12375Z and 12500Z Z-PAN steel belting is constructed of 3/8" or 1/2" nominal thickness hot-rolled carbon steel.

- 1/2" thick formed interlocking side wings welded to pans
- Double row high carbon die-punched side bars
- Pins are hardened RC 50-60
- Hardened single flange rollers
- Plain bearing rollers



Pin Style #3
Cottered



Pin Style #5
Locknut

CHAIN DATA (inches)

Description	Chain Number	
	1212	1225
Roller	Plain	Plain
TYPE		
DIA.	E	5
WIDTH		1 1/16
THK.	G	1/2
Side WIDTH	H	2 1/2
Bars SPACE	I	2 1/4
Pin DIA.	J	1
O.D.	K	1 3/8
Bushing LGTH.	L	3/4

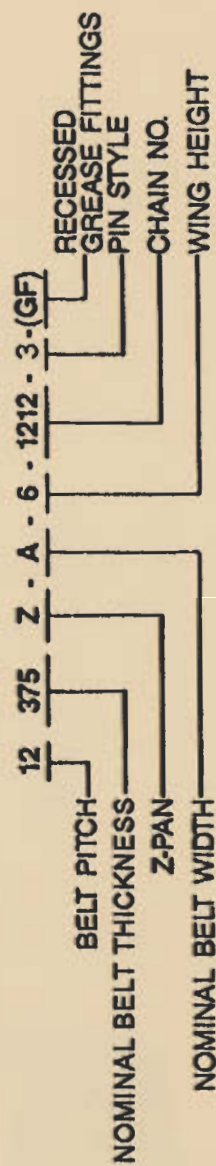
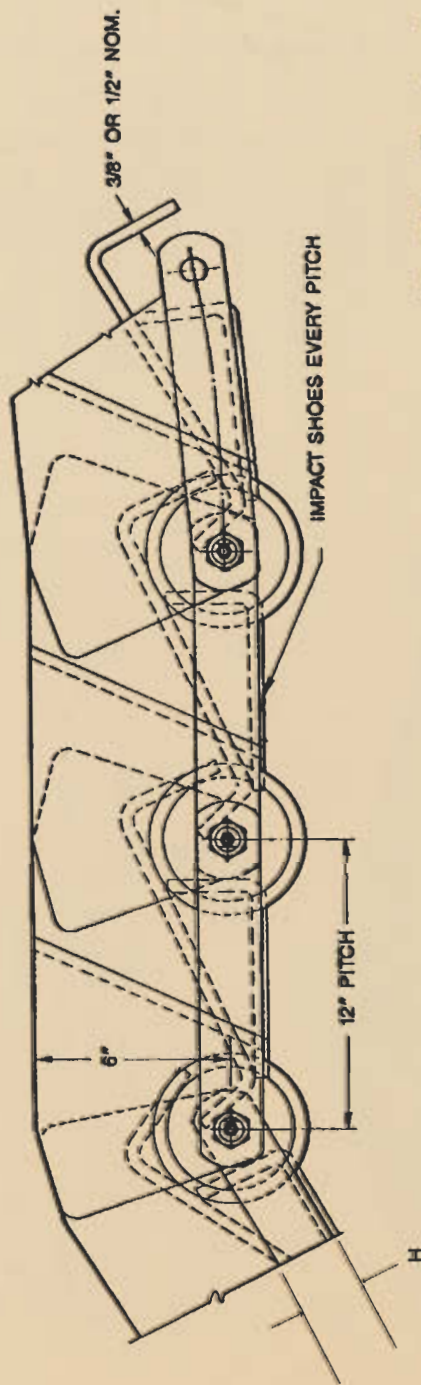
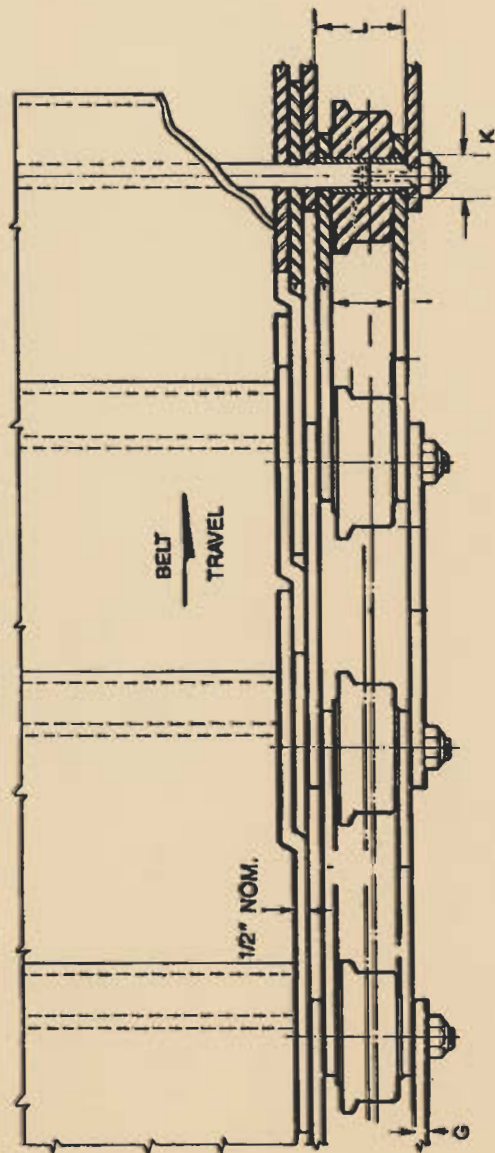
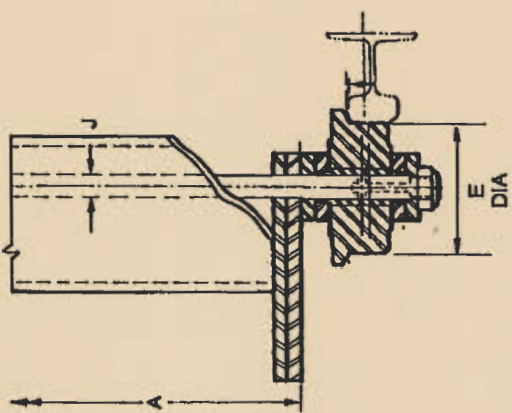
Allowable belt pull rating in lbs. 22,750 31,280

Top Cleat



Bottom Reinforcement





P.O. Box 43038 Cleveland, OH 44143-0038 • Phone: 440/461-4100 Fax: 440/461-0147

©MAYFRAN 2000

PRINTED USA

12Z 3-00 3M OP

12" PITCH Z-PAN STEEL BELT 12375Z & 12500Z