

FILTRATION GROUP

SERIES FC BAG FILTER HOUSINGS



- ASME 'UM' Code Stamp available
- Standard 2" NPT inlet/outlet connections
- Multiple pressure ratings available
- 1-1200 micron rated filter bags available in a variety of materials
- By-pass free filtration
- Low pressure drop
- Beadblast finish on all 304 SS models provides a smooth finish for easy cleaning
- Durable external paint finish for carbon steel models
- Filter bags or basket strainers



DESCRIPTION

Series FC side entry single bag filter housings improve filtration operation with the operator-friendly hinged lid, providing easy opening and fast bag changes.

BENEFITS

- Side entry-low pressure drop (2 psi) and no spill-over
- Fast changes-the swing bolt closure and hinged lid provide quick access to vessel
- By-pass free filtration-the bag fixing ring combined with the double O-ring design create a superior filter bag seal
- Minimum housing welds-ensure safe use and easy cleaning
- Installation-optional height adjustable legs for easy integration into existing pipe network

APPLICATIONS

The Series FC liquid bag filter housing is designed for high flow, heavy industry and OEM operations. It is an excellent particulate filter for a wide variety of liquid applications.

Filtration productivity increases with the Series FC because it can be used for flow rates up to 180 gpm.

Complete filter bag technical recommendation and replacement program available to assure optimum filtration results. Filter bags from 1-1200 micron available in a variety of media, designed to meet your application.



FILTRATION GROUP

SERIES FC BAG FILTER HOUSINGS

SERIES FC OPTIONS

Construction Material:

- Carbon Steel
- 304 SS

Pressure Ratings:

- 150 psi

ASME "UM" Code Stamp

Duplex or Multiple Units

Gasket Material:

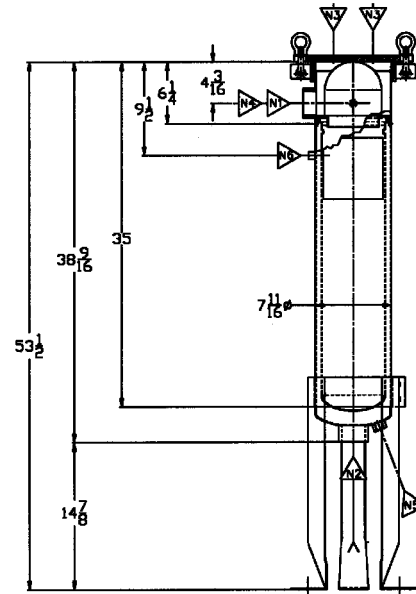
- Buna N (standard)
- Ethylene Propylene
- Viton
- Teflon encapsulated Viton
- Teflon encapsulated Silicone

Legs:

- Height adjustable leg assembly

Nozzle Schedule				
MK	Qty	Size	Nozzle	Type
N1	1	2"	Inlet	3000# NPT
N2	1	2"	Outlet	3000# NPT
N3	2	1/4"	Vent	NPT
N4	1	1/4"	Gauge	NPT
N5	1	3/4"	Drain	NPT
N6	1	1/4"	DP Gauge	NPT

SERIES FC DIMENSIONS



All dimensions are approximate.

SERIES FC TECHNICAL DATA

MODEL NUMBER	BAG SIZE	CONSTRUCTION MATERIAL	MAX WATER FLOW RATE	MAX OPERATING PRESSURE	FILTER AREA	VENT PORTS	NUMBER OF O-RINGS	ASME CODE
FC-112-C-100-2P	2	CS	180 gpm (40 m ³ /hr)	100 psi @ 150°F	5 ft ² (0.5 m ²)	2-1/4" NPT	2	N/A
FC-112-E-100-2P	2	304SS	180 gpm (40 m ³ /hr)	100 psi @ 150°F	5 ft ² (0.5 m ²)	2-1/4" NPT	2	N/A
FC-112-C-150-2P-U	2	CS	180 gpm (40 m ³ /hr)	150 psi @ 150°F	5 ft ² (0.5 m ²)	2-1/4" NPT	2	UM Stamp
FC-112-E-150-2P-U	2	304SS	180 gpm (40 m ³ /hr)	150 psi @ 150°F	5 ft ² (0.5 m ²)	2-1/4" NPT	2	UM Stamp

DISTRIBUTED BY

© FGI 06/03



FILTRATION GROUP

FILTRATION GROUP

Phone: 877-FGI-TEAM (344-8326)

Fax: 800-518-1162

www.filtrationgroup.com

e-mail: aerostar@filtrationgroup.com

